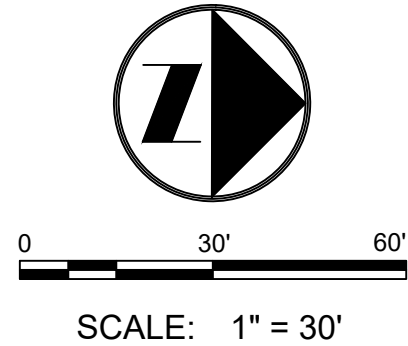
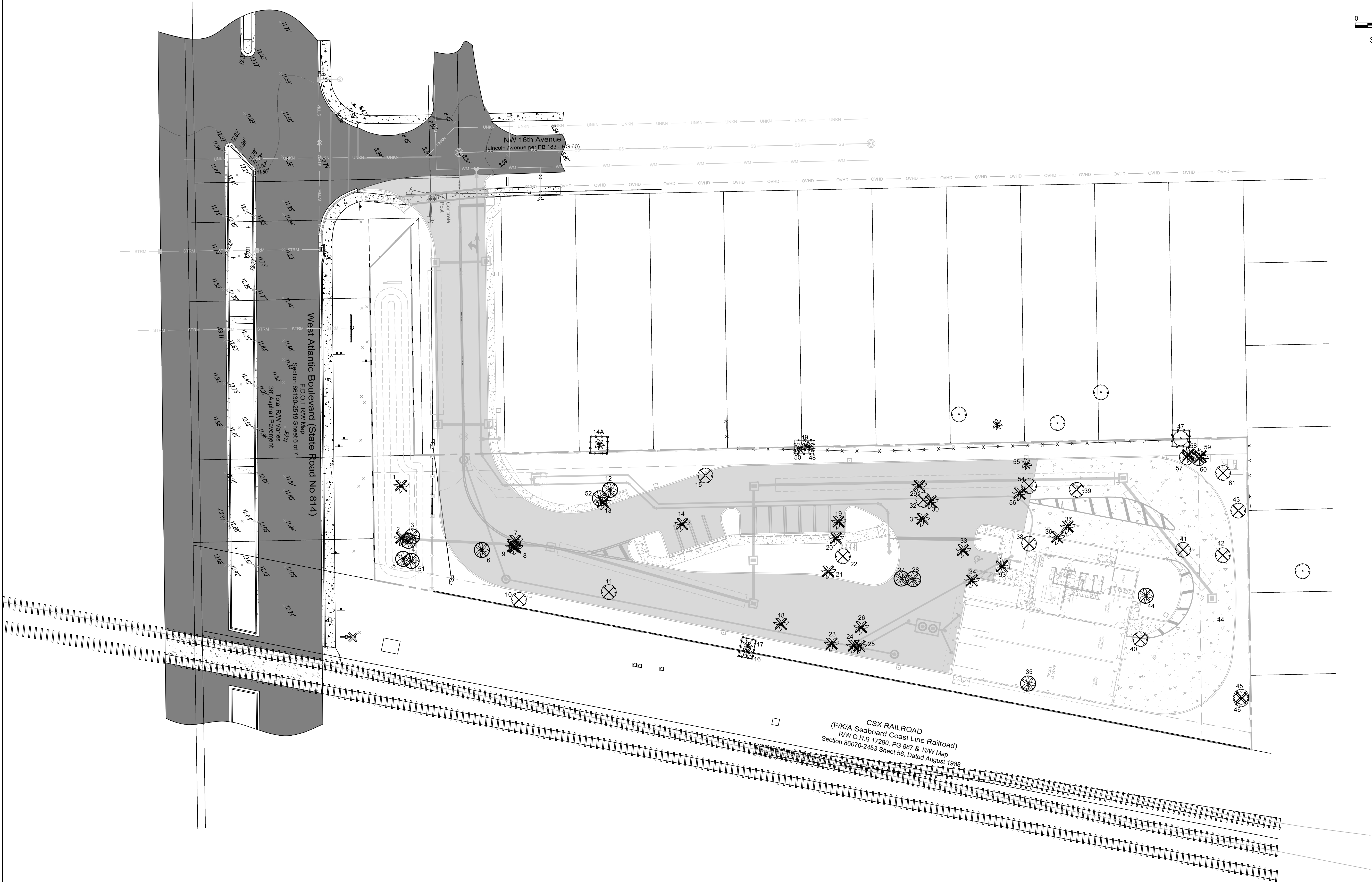


A:\2024\24-0055-001-01 1501 Atlantic Truck Wash\Drawings\24-0055-TD.dwg [TD-1] Sep 08, 2025 12:46pm NPA:STRE



LEGEND

- TREES / PALMS TO REMAIN
- TREE PROTECTION BARRICADE
- TREES / PALMS TO BE REMOVED
- TREES / PALMS TO BE RELOCATED
- TREES / PALMS TO REMAIN OFFSITE

No development, work, or demo activity shall be allowed within the dripline of a tree or tree protection area.

CRAVEN - THOMPSON AND ASSOCIATES, INC.
ENGINEERS • PLANNERS • SURVEYORS
3563 N.W. 53RD STREET, FORT LAUDERDALE, FLORIDA 33309
FAX: (954) 739-6409
TEL: (954) 739-6400
FLORIDA LICENSED ENGINEERS, SURVEYORS & MAPPING BUSINESS NO. 271
FLORIDA LICENSED LANDSCAPE ARCHITECTURE BUSINESS NO. C00014
RE. COPYRIGHT © 2015
MATERIAL SHOWN HEREIN IS THE PROPERTY OF CRAVEN THOMPSON & ASSOCIATES, INC. AND SHALL NOT BE REPRODUCED OR IN PART WITHOUT WRITTEN PERMISSION OF CRAVEN THOMPSON & ASSOCIATES.

ATLANTIC FLEET WASH
1501 WEST ATLANTIC BLVD.
POMPANO BEACH, FLORIDA

PREPARED FOR:
KAJA PROPERTIES INC.
TREE DISPOSITION PLAN

Nicole D. Pastre
Florida R.L.A. No. 6667397
2025-09-08

PROJECT NO.
24-0055-001-01

TD-1
SHEET ____ OF ____

AAC

PZ24 12000026

08.20.2025

DATE:	02/26/25	DATE:	
SCALE:	AS SHOWN	BY:	
DESIGN BY:	AKR	DESCRIPTION:	
DRAWN BY:	AKR		
CHECKED BY:	NDP		
APPROVED BY:	SWP		